

FLOOR PLAN

SYMBOLS LEGEND

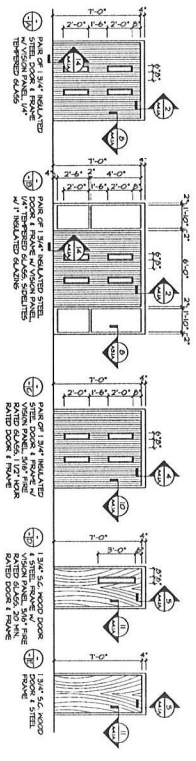
- ① ROOM NUMBER, IN ROOM
- ② ROOM NUMBER, IN CORRIDOR
- ③ ROOM NUMBER, IN STAIR
- ④ ROOM TYPE, SEE SCHEDULE
- ⑤ LETTERS AND NUMBERS REFER TO PARTITION
- ⑥ LETTERS AND NUMBERS REFER TO PARTITION
- ⑦ ROOM INDICATES DIRECTION OF VIEW
- ⑧ ROOM-DESIGNED FIRE EXTINGUISHER
- ⑨ FLOOR VERTICAL TRANSMISSION
- ⑩ CLASSROOM

PARTITIONS

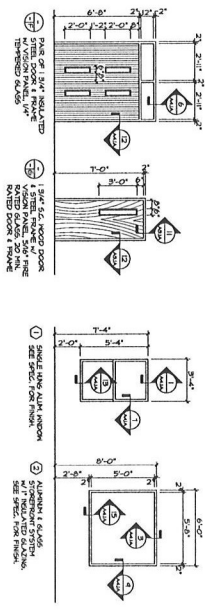
- 1" CONCRETE BLOCK - PAINT
- 2" CONCRETE BLOCK - PAINT
- 3" CONCRETE BLOCK - PAINT
- 4" CONCRETE BLOCK - PAINT
- 5" CONCRETE BLOCK - PAINT
- 6" CONCRETE BLOCK - PAINT
- 7" CONCRETE BLOCK - PAINT
- 8" CONCRETE BLOCK - PAINT
- 9" CONCRETE BLOCK - PAINT
- 10" CONCRETE BLOCK - PAINT
- 11" CONCRETE BLOCK - PAINT
- 12" CONCRETE BLOCK - PAINT
- 13" CONCRETE BLOCK - PAINT
- 14" CONCRETE BLOCK - PAINT
- 15" CONCRETE BLOCK - PAINT
- 16" CONCRETE BLOCK - PAINT
- 17" CONCRETE BLOCK - PAINT
- 18" CONCRETE BLOCK - PAINT
- 19" CONCRETE BLOCK - PAINT
- 20" CONCRETE BLOCK - PAINT
- 21" CONCRETE BLOCK - PAINT
- 22" CONCRETE BLOCK - PAINT
- 23" CONCRETE BLOCK - PAINT
- 24" CONCRETE BLOCK - PAINT
- 25" CONCRETE BLOCK - PAINT
- 26" CONCRETE BLOCK - PAINT
- 27" CONCRETE BLOCK - PAINT
- 28" CONCRETE BLOCK - PAINT
- 29" CONCRETE BLOCK - PAINT
- 30" CONCRETE BLOCK - PAINT
- 31" CONCRETE BLOCK - PAINT
- 32" CONCRETE BLOCK - PAINT
- 33" CONCRETE BLOCK - PAINT
- 34" CONCRETE BLOCK - PAINT
- 35" CONCRETE BLOCK - PAINT
- 36" CONCRETE BLOCK - PAINT
- 37" CONCRETE BLOCK - PAINT
- 38" CONCRETE BLOCK - PAINT
- 39" CONCRETE BLOCK - PAINT
- 40" CONCRETE BLOCK - PAINT
- 41" CONCRETE BLOCK - PAINT
- 42" CONCRETE BLOCK - PAINT
- 43" CONCRETE BLOCK - PAINT
- 44" CONCRETE BLOCK - PAINT
- 45" CONCRETE BLOCK - PAINT
- 46" CONCRETE BLOCK - PAINT
- 47" CONCRETE BLOCK - PAINT
- 48" CONCRETE BLOCK - PAINT
- 49" CONCRETE BLOCK - PAINT
- 50" CONCRETE BLOCK - PAINT
- 51" CONCRETE BLOCK - PAINT
- 52" CONCRETE BLOCK - PAINT
- 53" CONCRETE BLOCK - PAINT
- 54" CONCRETE BLOCK - PAINT
- 55" CONCRETE BLOCK - PAINT
- 56" CONCRETE BLOCK - PAINT
- 57" CONCRETE BLOCK - PAINT
- 58" CONCRETE BLOCK - PAINT
- 59" CONCRETE BLOCK - PAINT
- 60" CONCRETE BLOCK - PAINT
- 61" CONCRETE BLOCK - PAINT
- 62" CONCRETE BLOCK - PAINT
- 63" CONCRETE BLOCK - PAINT
- 64" CONCRETE BLOCK - PAINT
- 65" CONCRETE BLOCK - PAINT
- 66" CONCRETE BLOCK - PAINT
- 67" CONCRETE BLOCK - PAINT
- 68" CONCRETE BLOCK - PAINT
- 69" CONCRETE BLOCK - PAINT
- 70" CONCRETE BLOCK - PAINT
- 71" CONCRETE BLOCK - PAINT
- 72" CONCRETE BLOCK - PAINT
- 73" CONCRETE BLOCK - PAINT
- 74" CONCRETE BLOCK - PAINT
- 75" CONCRETE BLOCK - PAINT
- 76" CONCRETE BLOCK - PAINT
- 77" CONCRETE BLOCK - PAINT
- 78" CONCRETE BLOCK - PAINT
- 79" CONCRETE BLOCK - PAINT
- 80" CONCRETE BLOCK - PAINT
- 81" CONCRETE BLOCK - PAINT
- 82" CONCRETE BLOCK - PAINT
- 83" CONCRETE BLOCK - PAINT
- 84" CONCRETE BLOCK - PAINT
- 85" CONCRETE BLOCK - PAINT
- 86" CONCRETE BLOCK - PAINT
- 87" CONCRETE BLOCK - PAINT
- 88" CONCRETE BLOCK - PAINT
- 89" CONCRETE BLOCK - PAINT
- 90" CONCRETE BLOCK - PAINT
- 91" CONCRETE BLOCK - PAINT
- 92" CONCRETE BLOCK - PAINT
- 93" CONCRETE BLOCK - PAINT
- 94" CONCRETE BLOCK - PAINT
- 95" CONCRETE BLOCK - PAINT
- 96" CONCRETE BLOCK - PAINT
- 97" CONCRETE BLOCK - PAINT
- 98" CONCRETE BLOCK - PAINT
- 99" CONCRETE BLOCK - PAINT
- 100" CONCRETE BLOCK - PAINT

NOTE: REFER TO DATA LIFE SAFETY PLAN FOR RATED PARTITIONS

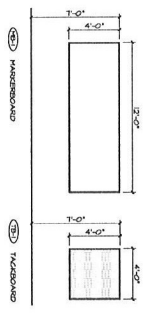
DOOR SCHEDULE



WINDOW SCHEDULE

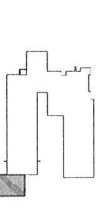


MARKERBOARD SCHEDULE



FINISH SCHEDULE

ROOM NAME	FLOOR	BASE	WALL	CEILING	CLG. TR. NOTES
01	1	VINYL COMPOSITION TILE	4\"/>		



KEY PLAN

FLOOR PLAN & SCHEDULES - HUGH GOODWIN

EL DORADO PUBLIC SCHOOL DISTRICT #15
HUGH GOODWIN & NORTHWEST ELEMENTARY ADDITIONS
EL DORADO, ARKANSAS

CADM ARCHITECTURE, Inc.
214 W. Washington, Suite #11
Little Rock, Arkansas 72201
PHONE (501) 653-7167
FAX (501) 653-4367
WWW.CADMARCHITECTURE.COM

