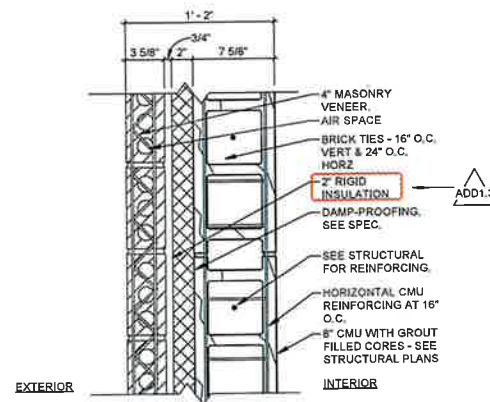
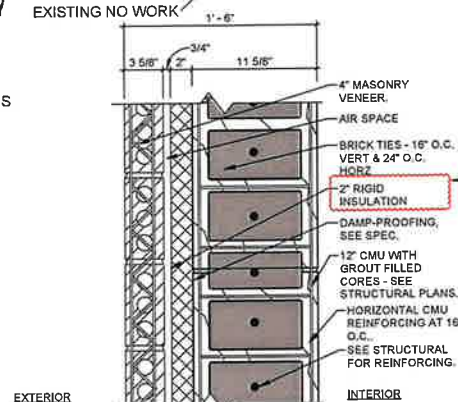


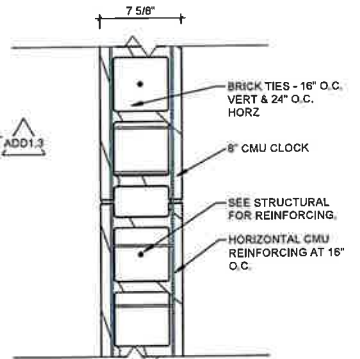
OVERALL AREA PLAN
 1" = 20'-0"
 1/2" = 1'-0"



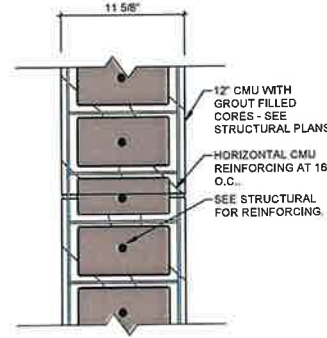
WALL TYPE A
 1 1/2" = 1'-0"



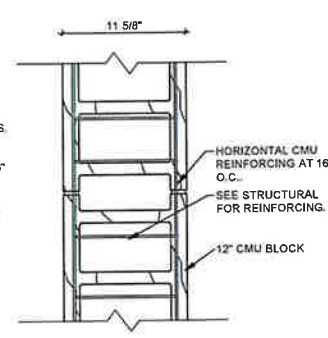
WALL TYPE B
 1 1/2" = 1'-0"



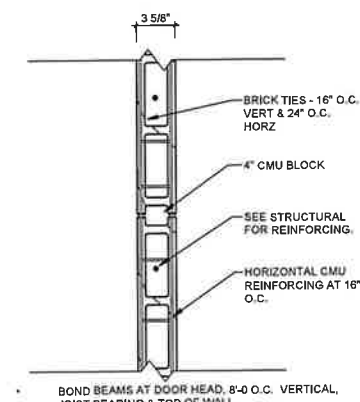
WALL TYPE C
 1 1/2" = 1'-0"



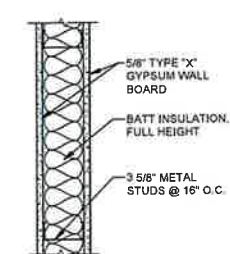
WALL TYPE D
 1 1/2" = 1'-0"



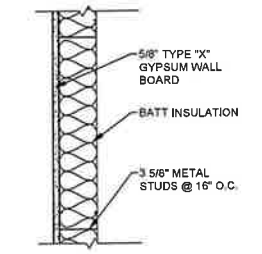
WALL TYPE E
 1 1/2" = 1'-0"



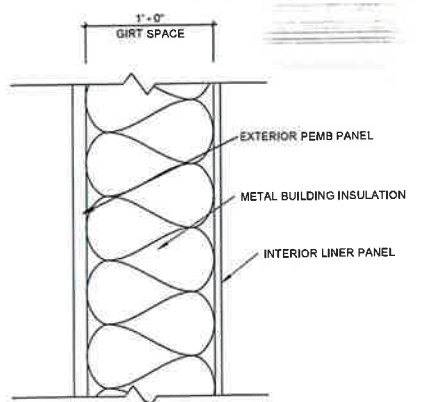
WALL TYPE F
 1 1/2" = 1'-0"



WALL TYPE G
 1 1/2" = 1'-0"



WALL TYPE H, H.1 AND H.2
 1 1/2" = 1'-0"



WALL TYPE J
 1 1/2" = 1'-0"



LANDMARK ARCHITECTS
 1020 NORTH MAIN, HUTCHINSON, KANSAS 67501
 620-663-5421 www.landmarkarchitects.net

ELEMENTARY ADDITION AND RENOVATIONS TO LA CROSSE MIDDLE/HIGH SCHOOL, USD 395
 400 WASHINGTON, LA CROSSE, KANSAS 67548

COMM. NO. : 2912-24
 DRW BY: KN
 UPDATED:
 ISS: 07/23/2024

DATE OF REVISION	REVISION NUMBER	REVISION:	REVISION SHEET NUMBER
07/31/2024	ADD1.3	WALL TYPE "A" AND "B" INSULATION THICKNESS CLARIFICATION OF 2"	A2.0

SHT A2.0

C:\Users\kurt\Documents\2023 LACROSSE ELEM ADDN TO HS 2912-24_kurt\757P.rvt
 07/23/2024 1:13:52

GENERAL POWER & SYSTEMS PLAN NOTES - AREA A

- A. ALL ELECTRICAL DEVICES SHALL BE FED FROM PNL DESIGNATED BY PNL DIVISION LINES, UNLESS NOTED OTHERWISE. SEE MOTOR SCHED. FOR PNL SOURCE FOR MOTOR LOADS.
- B. UNLESS NOTED OTHERWISE, ALL RECEPTACLES LOCATED ABOVE COUNTERS ARE TO BE MOUNTED 42" AFF TO CENTER OF BACK BOX, AND WALL MOUNTED TELEPHONE OUTLETS AND THERMOSTATS ARE TO BE MOUNTED 50" AFF TO CENTER OF BACKBOX. ALL STANDARD RECEPTACLES AND TELECOMMUNICATIONS OUTLETS ARE TO BE MOUNTED AT 18" AFF TO CENTER OF BACKBOX.
- C. E.C. TO PROVIDE A SINGLE GANG BOX AT EACH TELECOMMUNICATIONS OUTLET AND A 3/4" CONDUIT FROM BACK BOX TO ABOVE ACCESSIBLE CEILING, WIRING, JACKS, FACEPLATES, PHONE, ETC. TO BE PROVIDED BY OTHERS.
- D. ALL 15A & 20A RECEPTACLES LOCATED IN ALL AREA A CLASSROOMS, HALLWAYS, RESTROOMS, AND GYM SHALL BE LISTED TAMPER-RESISTANT. RECEPTACLES ABOVE 6" AFF DO NOT NEED TO BE TAMPER-RESISTANT.

POWER & SYSTEMS PLAN NOTES - AREA A

- 1. PROVIDE RECEPTACLE AT 58" AFF FOR SMART BOARD. PRIOR TO ROUGH-IN, CONFIRM LOCATION OF SMART BOARD WITH OWNER AND ARCHITECT AND COORDINATE LOCATION OF RECEPTACLE TO NOT CONFLICT WITH SMART BOARD MOUNTING BRACKET.
- 2. DASHED RECTANGLE DESIGNATES POTENTIAL TEACHER'S DESK LOCATION UTILIZED FOR BASIS OF DESIGN.
- 3. NON-POWERED GFCI DUPLEX RECEPTACLE FURNISHED WITH RTU, E.G. TO CONNECT TO CIRCUIT INDICATED.
- 4. FIELD COORDINATE REQUIRED HEIGHT/LOCATION OF DRINKING FOUNTAIN RECEPTACLE WITH PLUMBING CONTRACTOR. PROVIDE GFCI BREAKER IN PANEL.
- 5. PROVIDE FLUSH-MOUNTED BACK BOX FOR CONNECTION OF LOW-VOLTAGE TRANSFORMER FOR FAUCET CONTROLS. VERIFY MOUNTING HEIGHT OF BACK BOX AND ELECTRICAL REQUIREMENTS WITH PLUMBING CONTRACTOR PRIOR TO ROUGH-IN. CONNECT TO CIRCUIT INDICATED.
- 6. PROVIDE (1) 1-1/4" CONDUIT WITH BUSHINGS STUBBED THROUGH CMU WALL ABOVE CEILING FROM CORRIDOR INTO ROOM FOR TELECOMMUNICATIONS CABLING.
- 7. PROVIDE SINGLE GANG BACK BOX AT 42" AFF WITH 3/4" CONDUIT FROM BOX TO ABOVE NEAREST SUSPENDED CEILING FOR CABLING TO DOOR ACCESS CONTROL STATION FURNISHED AND INSTALLED BY OTHERS. CONFIRM BACK BOX LOCATION WITH SYSTEM SUPPLIER PRIOR TO ROUGH-IN.
- 8. PROVIDE 3/4" CONDUIT STUBBED INTO TOP OF DOOR FRAME MULLION AND RUN TO ABOVE THE NEAREST SUSPENDED CEILING FOR CABLING TO ELECTRIC LATCH OR MAG LOCK FURNISHED AND INSTALLED BY OTHERS. CONFIRM CONDUIT REQUIREMENTS WITH SECURITY SYSTEM SUPPLIER.

POWER & SYSTEMS PLAN NOTES - AREA A

- 9. PROVIDE 120V, 20A CONNECTION TO ELECTRIC LATCH OR MAG LOCK POWER SUPPLY LOCATED ABOVE SUSPENDED CEILING. CONNECT TO CIRCUIT INDICATED. CONFIRM POWER SUPPLY LOCATION WITH SECURITY SYSTEM SUPPLIER PRIOR TO INSTALLATION.
- 10. PROVIDE SINGLE GANG TV OUTLET BACK BOX AND MOUNT ALONG WITH ADJACENT RECEPTACLE AT 74" AFF FOR TV. PROVIDE 3/4" CONDUIT FROM TV OUTLET BACK BOX TO ABOVE SUSPENDED CEILING. TV WIRING AND AV CABLING TO BE PROVIDED BY OTHERS. CONFIRM TV LOCATION WITH OWNER PRIOR TO ROUGH-IN.
- 11. RECEPTACLE ON DEDICATED CIRCUIT FOR REFRIGERATOR. MOUNT AT 42" AFF. PROVIDE GFCI BREAKER IN PANEL.
- 12. RECEPTACLE ON DEDICATED CIRCUIT FOR MICROWAVE. MOUNT AT 58" AFF IN BACK OF MICROWAVE CUBBIE. PROVIDE GFCI BREAKER IN PANEL.
- 13. PROVIDE CORD AND PLUG AND RECEPTACLE FOR DISPOSAL. PROVIDE SWITCH ABOVE COUNTER AT LOCATION SHOWN AT 42" AFF AND WIRE TO CONTROL RECEPTACLE.
- 14. RECEPTACLE ON DEDICATED CIRCUIT FOR POPCORN MACHINE. MOUNT AT 18" AFF.
- 15. RECEPTACLE ON DEDICATED CIRCUIT FOR ICE MAKER. MOUNT AT 18" AFF. BASIS OF DESIGN IS 120V, 20A STANDARD DUPLEX RECEPTACLE. CONFIRM ELECTRICAL REQUIREMENTS WITH OWNER PRIOR TO ROUGH-IN.
- 16. RECEPTACLE ON DEDICATED CIRCUIT AND ADJACENT TELECOMMUNICATIONS OUTLET FOR COPIER. FIELD CONFIRM COPIER LOCATION WITH OWNER PRIOR TO ROUGH-IN.
- 17. COORDINATE WITH FIRE SPRINKLER SYSTEM INSTALLER AND CONNECT PROVIDED WATER FLOW AND TAMPER SWITCHES TO FIRE ALARM SYSTEM. PROVIDE INDIVIDUAL ADDRESSABLE MODULES TO MONITOR THE WATER FLOW AND TAMPER SWITCHES.

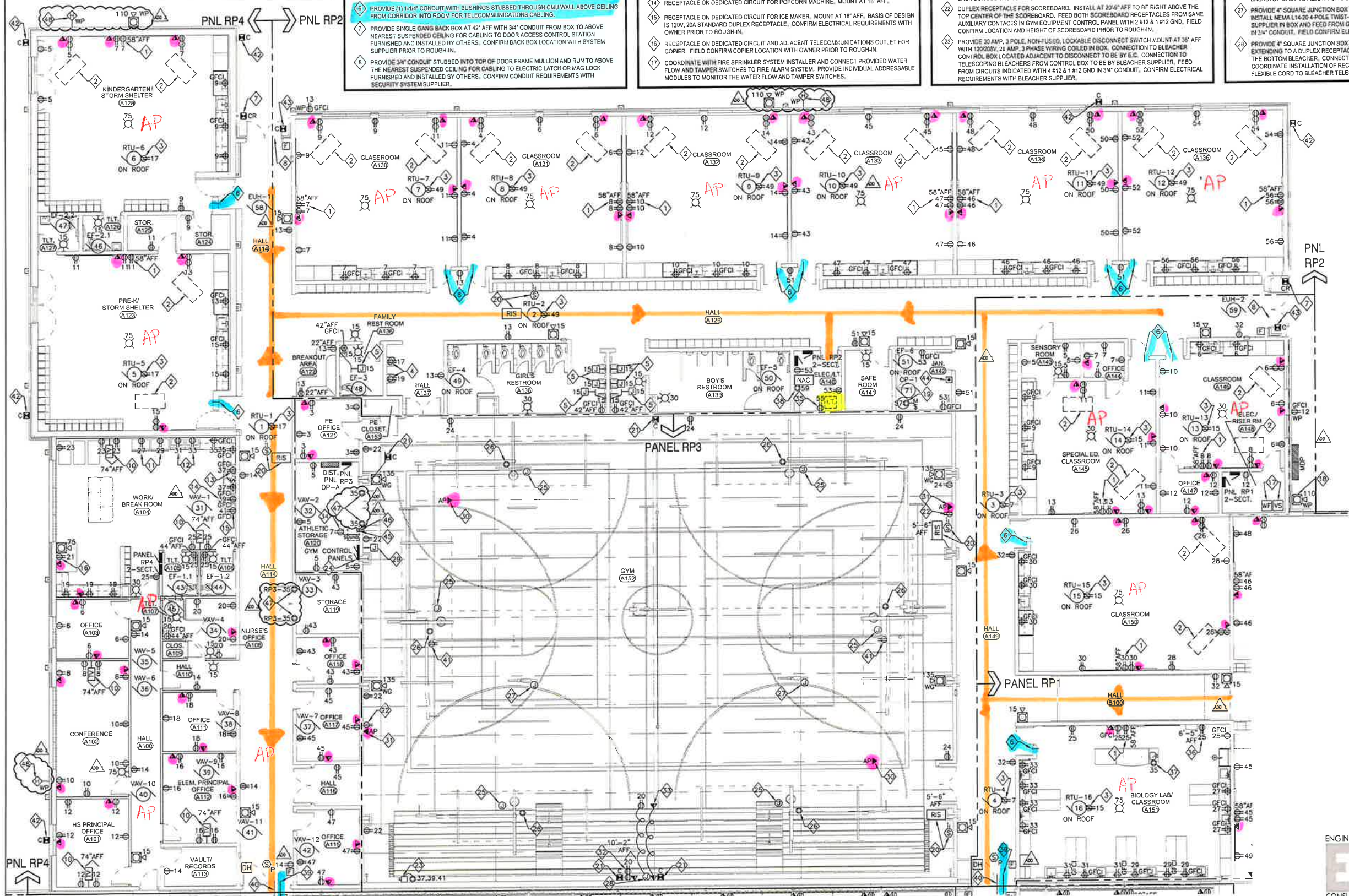
POWER & SYSTEMS PLAN NOTES - AREA A

- 18. PROVIDE EXTERIOR WP FIRE ALARM HORN/STROBE UNIT FOR WATER FLOW INDICATION AND WIRE TO FIRE ALARM SYSTEM AND WATER FLOW SWITCH. COORDINATE INSTALLATION WITH SPRINKLER SYSTEM INSTALLER.
- 19. PROVIDE MANUAL MOTOR TOGGLE DISCONNECT SWITCH AND 120V, 20A CONNECTION TO GAS WATER HEATER FOR POWERED BURNER. CONNECT TO CIRCUIT INDICATED. WIRE CIRCUIT THROUGH EMERGENCY STOP PUSHBUTTON.
- 20. DUCT SMOKE DETECTOR TO BE LOCATED IN RETURN AIR DUCT OF ROOF-TOP UNIT. CONNECT DETECTOR TO BUILDING FIRE ALARM SYSTEM AND PROVIDE WIRING AS NECESSARY SO THAT ACTIVATION OF DETECTOR SHUTS DOWN UNIT. PROVIDE REMOTE INDICATOR AND TEST STATION AND MOUNT ON CEILING TILE BELOW DETECTOR (EAST WALL OF GYM A152 AT 5'-6" AFF FOR RTU-3 & 4).
- 21. PROVIDE SINGLE GANG MASONRY BOX AT APPROXIMATELY 13'-6" AFF WITH 3/4" CONDUIT FROM BOX TO ABOVE NEAREST AREA A HALL SUSPENDED CEILING OR TO ELEC. A140 FOR CABLING TO INTERIOR SECURITY CAMERA FURNISHED & INSTALLED BY OTHERS. CONFIRM BACK BOX LOCATION & HEIGHT WITH SECURITY SYSTEM SUPPLIER PRIOR TO ROUGH-IN.
- 22. DUPLEX RECEPTACLE FOR SCOREBOARD. INSTALL AT 20" AFF TO BE RIGHT ABOVE THE TOP CENTER OF THE SCOREBOARD. FEED BOTH SCOREBOARD RECEPTACLES FROM SAME AUXILIARY CONTACTS IN GYM EQUIPMENT CONTROL PANEL WITH 2 #12 & 1 #12 GND. FIELD CONFIRM LOCATION AND HEIGHT OF SCOREBOARD PRIOR TO ROUGH-IN.
- 23. PROVIDE 30 AMP, 3 POLE, NON-FUSED, LOCKABLE DISCONNECT SWITCH MOUNT AT 36" AFF WITH 120/208V, 20 AMP, 3 PHASE WIRING COILED IN BOX. CONNECTION TO BLEACHER TELESCOPING BLEACHERS FROM CONTROL BOX TO BE BY BLEACHER SUPPLIER. FEED FROM CIRCUITS INDICATED WITH 4 #12 & 1 #12 GND IN 3/4" CONDUIT. CONFIRM ELECTRICAL REQUIREMENTS WITH BLEACHER SUPPLIER.

POWER & SYSTEMS PLAN NOTES - AREA A

- 24. GYM EQUIPMENT CONTROL PANELS #1 & #2 FURNISHED BY GYM EQUIPMENT SUPPLIER. INSTALLED BY E.C. FEED EACH CONTROL PANEL WITH (2) 120V, 30A CIRCUITS FROM PANEL RP3. CONNECT TO CIRCUITS 9, 11, 13 & 15 AND FEED EACH CIRCUIT WITH 2 #12 & 1 #10 GND. CONTROL PANEL #1 TO FEED THE 2 MAIN BASKETBALL BACKSTOPS AND 2 ASSOCIATED HEIGHT ADJUSTERS, 2 VOLLEYBALL NETS AND THE 2 SCOREBOARDS & 2 SHOT CLOCKS. CONTROL PANEL #2 TO FEED THE 4 SIDE BASKETBALL BACKSTOPS AND 4 ASSOCIATED HEIGHT ADJUSTERS. CONFIRM ELEC. REQUIREMENTS WITH GYM EQUIPMENT SUPPLIER.
- 25. PROVIDE 4" SQUARE JUNCTION BOX WITHIN 3'-0" OF WHICH LOCATION NEAR TOP OF BASKETBALL BACKSTOP MAST. INSTALL NEMA L14-20 4-POLE TWIST-LOCK RECEPTACLE FURNISHED BY BACKSTOP SUPPLIER IN BOX AND FEED FROM GYM EQUIPMENT CONTROL PANEL WITH 3 #12 & 1 #12 GND IN 3/4" CONDUIT. FIELD CONFIRM ELECTRIC WHICH LOCATION PRIOR TO INSTALLING BOX.
- 26. PROVIDE CONNECTION TO JUNCTION BOX LOCATED AT TOP OF BASKETBALL BACKSTOP HEIGHT ADJUSTER. FEED FROM GYM EQUIPMENT CONTROL PANEL WITH 3 #12 & 1 #12 GND IN 3/4" CONDUIT. PROVIDE JUNCTION BOXES WITH FLEXIBLE CONDUIT IN BETWEEN AT TOP OF BACKSTOP MAST TO ALLOW FOR SIDE-FOLDING OF BACKSTOP.
- 27. PROVIDE 4" SQUARE JUNCTION BOX WITHIN 3'-0" OF WHICH LOCATION FOR VOLLEYBALL NET SUPPLIER IN BOX AND FEED FROM GYM EQUIPMENT CONTROL PANEL WITH 3 #12 & 1 #12 GND IN 3/4" CONDUIT. FIELD CONFIRM ELECTRIC WHICH LOCATION PRIOR TO INSTALLING BOX.
- 28. PROVIDE 4" SQUARE JUNCTION BOX SURFACE MOUNTED AT 36" AFF WITH A FLEXIBLE CORD EXTENDING TO A DUPLEX RECEPTACLE FURNISHED AND INSTALLED BY E.C. IN THE FACE OF THE BOTTOM BLEACHER. CONNECT DUPLEX RECEPTACLE TO CIRCUIT INDICATED. COORDINATE INSTALLATION OF RECEPTACLE WITH BLEACHER SUPPLIER AND FESTOON FLEXIBLE CORD TO BLEACHER TELESCOPING MECHANISM.

SEE SHEET E3.2 FOR CONTINUATION OF AREA A POWER & SYSTEMS PLAN NOTES



KEY PLAN

POWER & SYSTEMS PLAN - AREA A
E3.1 1/8" = 1'-0"



LANDMARK ARCHITECTS
1020 NORTH MAIN, HUTCHINSON, KANSAS 67501
www.landmarkarchitects.net

ELEMENTARY ADDITION AND RENOVATIONS TO LA CROSSE MIDDLE/HIGH SCHOOL, USD 395
400 WASHINGTON, LA CROSSE, KANSAS 67548

COMM. NO.:	2912-24
DRAWN BY:	LEE
REVISED:	08/14/24
DATE:	JULY 2024
SHEET	E3.1

ENGINEERING

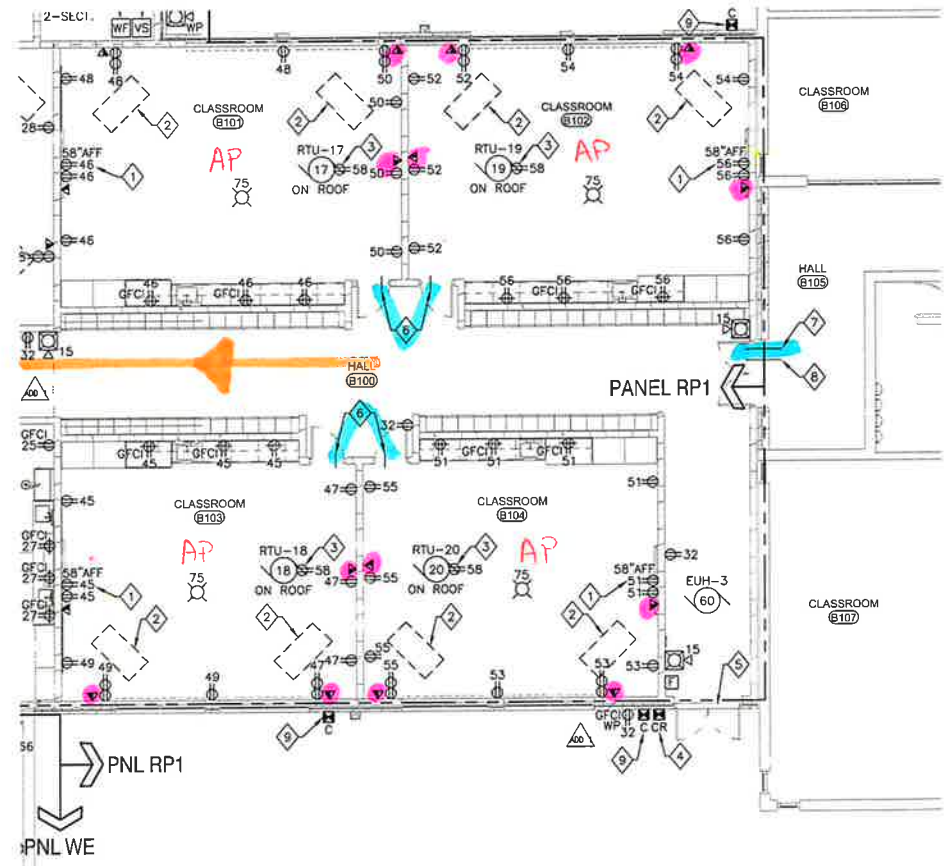
 ENGINEERING CONSULTANTS, P.A.
 1227 NORTH MAIN STREET
 P.O. BOX 923
 HUTCHINSON, KS 67504-0923
 620.663.8294
 ec-project@ecconsultants.com

POWER & SYSTEMS PLAN NOTES - AREA A CONTINUED

- 29. PROVIDE RACO 84L OR EQUAL, 8-5/8" X 4-1/2" X 2-1/2" DEEP BACK BOX AT 50" AFF WITH 3/4" CONDUIT FROM BOX TO GYM EQUIPMENT CONTROL PANEL FOR GYM EQUIPMENT CONTROL KEYPAD FURNISHED AND INSTALLED BY GYM EQUIPMENT SUPPLIER. CONFIRM REQUIREMENTS WITH SUPPLIER PRIOR TO ROUGH-IN.
- 30. PROVIDE ROUND OUTLET BOX SURFACE-MOUNTED UP HIGH TO BOTTOM OF STRUCTURAL PURLIN FOR WIRELESS ACCESS POINT WITH 3/4" CONDUIT FROM BOX BACK TO I.T. RACK IN ELEC./I.T. ROOM A140. WIRELESS ACCESS POINT FURNISHED AND INSTALLED BY OTHERS.
- 31. PROVIDE 4" SQUARE BACKBOX FLUSH-MOUNTED IN WALL AT 12'-2" AFF FOR WIRELESS ACCESS POINT WITH 3/4" CONDUIT FROM BACKBOX BACK TO I.T. RACK IN ELEC./I.T. ROOM 140. WIRELESS ACCESS POINT FURNISHED AND INSTALLED BY OTHERS. CONFIRM BACKBOX COMPATIBILITY WITH WIRELESS ACCESS POINT SUPPLIER BEFORE ROUGH-IN.
- 32. INSTALL DOUBLE DUPLEX RECEPTACLE AND TELECOMMUNICATIONS OUTLET AT 10'-2" AFF TO ABOVE BLEACHERS AND VIDEO PLATFORM.
- 33. PROVIDE SINGLE GANG BACK BOX IN THE FACE OF THE BOTTOM BLEACHER FOR DATA JACKS BY OWNER. OWNER TO FURNISH AND INSTALL DATA CABLING AND JACKS AND FESTOON CABLING TO BLEACHER TELESCOPING MECHANISM.
- 34. GYM SOUND SYSTEM RACK FURNISHED AND INSTALLED BY SOUND SYSTEM SUPPLIER. E.C. TO PROVIDE DUPLEX RECEPTACLE AT 30" AFF ON DEDICATED 120V, 20A CIRCUIT BELOW RACK FOR AV RACK POWER. CONFIRM RECEPTACLE LOCATION WITH AV SYSTEM SUPPLIER.
- 35. PROVIDE DUPLEX RECEPTACLE AT 42" AFF ON DEDICATED 120V, 20A CIRCUIT FOR I.T. RACK POWER. CONFIRM RECEPTACLE LOCATION WITH I.T. PERSONNEL.
- 36. PROVIDE RECEPTACLE ADJACENT TO SAFETY GLASSES CABINET AT 6'-4" AFF FOR CABINET POWER. CONFIRM ELECTRICAL REQUIREMENTS WITH BIOLOGY LAB FURNITURE SUPPLIER PRIOR TO ROUGH-IN.
- 37. PROVIDE 120V, 20A CONNECTION TO DEMO TABLE, FED FROM BELOW. TABLE COMES FURNISHED WITH 1 DUPLEX RECEPTACLE AND 2 GFCI DUPLEX RECEPTACLES. CONNECT TO CIRCUIT INDICATED. CONFIRM ELECTRICAL REQUIREMENTS WITH BIOLOGY LAB FURNITURE SUPPLIER PRIOR TO ROUGH-IN.
- 38. PROVIDE 120V, 20A CONNECTION TO FIRE ALARM SYSTEM NOTIFICATION APPLIANCE CIRCUIT (RACO) PANEL. CONNECT TO CIRCUIT INDICATED.
- 39. PROVIDE (1) 2" CONDUIT WITH BUSHINGS STUBBED THROUGH CMU FIRE WALL ABOVE CEILING FROM EXISTING HALL INTO NEW HALL FOR TELECOMMUNICATIONS AND SECURITY SYSTEM CABLING. SEE 2 HOUR WALL PENETRATION DETAIL ON SHEET E1.2 FOR SEALING CONDUIT PENETRATION.
- 40. PROVIDE (1) 1" CONDUIT WITH BUSHINGS STUBBED THROUGH CMU FIRE WALL ABOVE CEILING FROM EXISTING HALL INTO NEW HALL FOR FIRE ALARM CABLING. SEE 2 HOUR WALL PENETRATION DETAIL ON SHEET E1.2 FOR SEALING CONDUIT PENETRATION.

POWER & SYSTEMS PLAN NOTES - AREA A CONTINUED

- 41. DUPLEX RECEPTACLE FOR SHOT CLOCK TO BE MOUNTED ON BASKETBALL BACKSTOP MAST WITHIN 6' OF SHOT CLOCK LOCATION. PROVIDE 4" SQUARE JUNCTION BOX AT STRUCTURE WITH A FLEXIBLE CORD EXTENDING TO THE DUPLEX RECEPTACLE TO ALLOW FOR FOLDING AND ADJUSTING OF BASKETBALL BACKSTOP MAST. FEED BOTH SHOT CLOCK RECEPTACLES FROM SAME AUXILIARY CONTACTS IN GYM EQUIPMENT PANEL WITH 2 #12 & 1 #12 GND. FIELD CONFIRM LOCATION OF SHOT CLOCK PRIOR TO INSTALLATION.
- 42. PROVIDE SINGLE GANG BOX AT 10'-2" AFF, UNLESS A DIFFERENT HEIGHT IS NOTED, WITH 3/4" CONDUIT FROM BOX TO ABOVE NEAREST SUSPENDED CEILING FOR CABLING TO SECURITY CAMERA FURNISHED & INSTALLED BY OTHERS. CONFIRM BACK BOX LOCATION & HEIGHT WITH SECURITY SYSTEM SUPPLIER PRIOR TO ROUGH-IN.
- 43. PROVIDE SINGLE GANG BOX IN COVERED CEILING WITH 3/4" CONDUIT FROM BOX TO ABOVE NEAREST SUSPENDED CEILING FOR CABLING TO SECURITY CAMERA FURNISHED & INSTALLED BY OTHERS. CONFIRM BACK BOX LOCATION & HEIGHT WITH SECURITY SYSTEM SUPPLIER PRIOR TO ROUGH-IN.
- 44. PROVIDE EMERGENCY STOP PUSHBUTTON, 2-POSITION, MAINTAINED CONTACT, PULL ON, PUSH OFF, EATON #102501562-5106, OR EQUAL, FOR WATER HEATER SHUT-OFF. SURFACE MOUNT AT 50" AFF AT LOCATION SHOWN AND WIRE TO CONTROL WATER HEATER CIRCUIT.
- 45. PROVIDE 1" CONDUIT FROM ABOVE SOUND SYSTEM RACK UP BACKSIDE OF CMU PORTION OF WEST GYM WALL AND THROUGH WEST GYM WALL ABOVE THE CMU PORTION AND THEN UP TO WITHIN PURLIN SPACE FOR WIRELESS ANTENNA WIRING BY SOUND SYSTEM SUPPLIER.
- 46. PROVIDE (1) 1-1/2" CONDUIT FROM ABOVE SOUND SYSTEM RACK UP BACKSIDE OF CMU PORTION OF WEST GYM WALL AND THROUGH WEST GYM WALL ABOVE THE CMU PORTION AND THEN UP TO WITHIN PURLIN SPACE FOR SPEAKER WIRING BY SOUND SYSTEM SUPPLIER.
- 47. PROVIDE 20V, 20A CONNECTION TO DOOR CLOSER THAT COMES WITH INTEGRAL SMOKE DETECTOR. CONNECT TO CIRCUIT INDICATED. DOOR CLOSER TO RELEASE UPON DETECTION OF SMOKE. DOOR CLOSER IS STAND-ALONE AND NOT CONNECTED TO THE FIRE ALARM SYSTEM.
- 48. PROVIDE SINGLE GANG BACK BOX AT 10'-2" AFF WITH 3/4" CONDUIT FROM BOX TO ABOVE NEAREST SUSPENDED CEILING FOR CABLING TO EXTERIOR PUBLIC ADDRESS HORN SPEAKER FURNISHED & INSTALLED BY OTHERS. CONFIRM BACK BOX LOCATION & HEIGHT WITH P.A. SYSTEM SUPPLIER PRIOR TO ROUGH-IN.



POWER & SYSTEMS PLAN - AREA B
E3.2 1/8" = 1'-0"

GENERAL POWER & SYSTEMS PLAN NOTES - AREA B

- A. ALL ELECTRICAL DEVICES SHALL BE FED FROM PANEL DESIGNATED BY PANEL DIVISION LINES, UNLESS NOTED OTHERWISE. SEE MOTOR SCHEDULE FOR PANEL SOURCE FOR MOTOR LOADS.
- B. UNLESS NOTED OTHERWISE, ALL RECEPTACLES LOCATED ABOVE COUNTERS ARE TO BE MOUNTED 42" AFF TO CENTER OF BACKBOX, AND WALL-MOUNTED TELEPHONE OUTLETS AND THERMOSTATS ARE TO BE MOUNTED 50" AFF TO CENTER OF BACKBOX. ALL STANDARD RECEPTACLES AND TELECOMMUNICATIONS OUTLETS ARE TO BE MOUNTED AT 18" AFF TO CENTER OF BACKBOX.
- C. E.C. TO PROVIDE A SINGLE GANG BOX AT EACH TELECOMMUNICATIONS OUTLET AND A 3/4" CONDUIT FROM BACK BOX TO ABOVE ACCESSIBLE CEILING. WIRING, JACKS, FACEPLATES, PHONES, ETC. TO BE PROVIDED BY OTHERS.
- D. ALL 15A & 20A RECEPTACLES LOCATED IN PRESCHOOL OR ELEMENTARY CLASSROOMS (ALL AREA A & B CLASSROOMS), HALLWAYS, RESTROOMS, AND GYM SHALL BE LISTED TAMPER-RESISTANT. RECEPTACLES ABOVE 60" AFF 00 NOT NEED TO BE TAMPER-RESISTANT.

POWER & SYSTEMS PLAN NOTES - AREA B

- 1. PROVIDE RECEPTACLE AT 58" AFF FOR SMART BOARD. PRIOR TO ROUGH-IN, CONFIRM LOCATION OF SMART BOARD WITH OWNER AND ARCHITECT AND COORDINATE LOCATION OF RECEPTACLE TO NOT CONFLICT WITH SMART BOARD MOUNTING BRACKET.
- 2. DASHED RECTANGLE DESIGNATES POTENTIAL TEACHER'S DESK LOCATION UTILIZED FOR BASIS OF DESIGN.
- 3. NON-POWERED GFCI DUPLEX RECEPTACLE FURNISHED WITH RTU. E.C. TO CONNECT TO CIRCUIT INDICATED.
- 4. PROVIDE SINGLE GANG BACK BOX AT 42" AFF WITH 3/4" CONDUIT FROM BOX TO ABOVE NEAREST SUSPENDED CEILING FOR CABLING TO DOOR ACCESS CONTROL. STATION FURNISHED AND INSTALLED BY OTHERS. CONFIRM BACK BOX LOCATION WITH SYSTEM SUPPLIER PRIOR TO ROUGH-IN.
- 5. PROVIDE 3/4" CONDUIT STUBBED INTO TOP OF DOOR FRAME MULLION AND RUN TO ABOVE THE NEAREST SUSPENDED CEILING FOR CABLING TO ELECTRIC LATCH OR MAG LOCK FURNISHED AND INSTALLED BY OTHERS. CONFIRM CONDUIT REQUIREMENTS WITH SECURITY SYSTEM SUPPLIER.
- 6. PROVIDE (1) 1-1/4" CONDUIT WITH BUSHINGS STUBBED THROUGH CMU WALL ABOVE CEILING FROM CORRIDOR INTO ROOM FOR TELECOMMUNICATIONS CABLING.
- 7. PROVIDE (1) 2" CONDUIT WITH BUSHINGS STUBBED THROUGH CMU FIRE WALL ABOVE CEILING FROM EXISTING HALL 8105 INTO NEW HALL 8100 FOR TELECOMMUNICATIONS AND SECURITY SYSTEM CABLING. SEE 2 HOUR WALL PENETRATION DETAIL ON SHEET E1.2 FOR SEALING CONDUIT PENETRATION.
- 8. PROVIDE (1) 1" CONDUIT WITH BUSHINGS STUBBED THROUGH CMU FIRE WALL ABOVE CEILING FROM EXISTING HALL 8105 INTO NEW HALL 8100 FOR FIRE ALARM CABLING. SEE 2 HOUR WALL PENETRATION DETAIL ON SHEET E1.2 FOR SEALING CONDUIT PENETRATION.
- 9. PROVIDE SINGLE GANG BOX AT 10'-2" AFF, UNLESS A DIFFERENT HEIGHT IS NOTED, WITH 3/4" CONDUIT FROM BOX TO ABOVE NEAREST SUSPENDED CEILING FOR CABLING TO SECURITY CAMERA FURNISHED & INSTALLED BY OTHERS. CONFIRM BACK BOX LOCATION & HEIGHT WITH SECURITY SYSTEM SUPPLIER PRIOR TO ROUGH-IN.



KEY PLAN

ENGINEERING
EC
 CONSULTANTS
 ENGINEERING CONSULTANTS, P.A.
 1227 NORTH MAIN STREET
 P.O. BOX 932
 HUTCHINSON, KS 67504-0932
 620-665-6374 #1@engineering-consultants.com
 www.ec-engineers.com

**ELEMENTARY ADDITION AND RENOVATIONS TO
 LA CROSSE MIDDLE/HIGH SCHOOL, USD 395
 400 WASHINGTON, LA CROSSE, KANSAS 67548**

COMM. NO. : 2912-24
 DRAWN BY : LEE
 REVISED : 08/14/24
 DATE : JULY 2024
**SHEET
 E3.2**

**LANDMARK
 ARCHITECTS**
 1020 NORTH MAIN, HUTCHINSON, KANSAS 67501
 www.landmarkarchitects.net
 620-665-5471

GENERAL POWER & SYSTEMS PLAN NOTES - AREA C

- A. ALL ELECTRICAL DEVICES SHALL BE FED FROM NEW PANEL NW, UNLESS NOTED OTHERWISE. SEE MOTOR SCHEDULE FOR PANEL SOURCE FOR MOTOR LOADS.
- B. UNLESS NOTED OTHERWISE, ALL RECEPTACLES LOCATED ABOVE COUNTERS ARE TO BE MOUNTED 42" AFF TO CENTER OF BACKBOX, AND WALL-MOUNTED TELEPHONE OUTLETS AND THERMOSTATS ARE TO BE MOUNTED 50" AFF TO CENTER OF BACKBOX. ALL STANDARD RECEPTACLES AND TELECOMMUNICATIONS OUTLETS ARE TO BE MOUNTED AT 18" AFF TO CENTER OF BACKBOX.
- C. E.C. TO PROVIDE A SINGLE GANG BOX AT EACH TELECOMMUNICATIONS OUTLET AND A 3/4" CONDUIT FROM BACK BOX TO ABOVE ACCESSIBLE CEILING. WIRING JACKS, FACEPLATES, PHONES, ETC. TO BE PROVIDED BY OTHERS.

POWER & SYSTEMS PLAN NOTES - AREA C

- 1. PROVIDE RECEPTACLE AT 58" AFF FOR SMART BOARD. PRIOR TO ROUGH-IN, CONFIRM LOCATION OF SMART BOARD WITH OWNER AND ARCHITECT AND COORDINATE LOCATION OF RECEPTACLE TO NOT CONFLICT WITH SMART BOARD MOUNTING BRACKET.
- 2. NON-POWERED GFCI DUPLEX RECEPTACLE FURNISHED WITH RTU. E.C. TO CONNECT TO EXISTING CIRCUIT THAT FED RECEPTACLES ADJACENT TO REMOVED CONDENSING UNITS. REWORK AND EXTEND CONDUIT AND WIRING AS NECESSARY.
- 3. EXISTING PANEL M2 TO BE RELOCATED TO THIS LOCATION WITH DOOR OPENING TO THE NORTH. PROVIDE JUNCTION BOX ABOVE NEW SUSPENDED CEILING NEAR EXISTING PANEL M2 LOCATION AND INTERCEPT EXISTING-TO-REMAIN CIRCUITS AND EXTEND TO NEW PANEL M2 LOCATION.
- 4. RECEPTACLE ON DEDICATED CIRCUIT AND ADJACENT TELECOMMUNICATIONS OUTLET FOR COPIER. FIELD CONFIRM COPIER LOCATION WITH OWNER PRIOR TO ROUGH-IN.
- 5. PROVIDE SINGLE GANG TV OUTLET BACK BOX AND MOUNT ALONG WITH ADJACENT RECEPTACLE AT 74" AFF FOR TV. PROVIDE 3/4" CONDUIT FROM TV OUTLET BACK BOX TO ABOVE SUSPENDED CEILING. TV WIRING AND AV CABLING TO BE PROVIDED BY OTHERS. CONFIRM TV LOCATION WITH OWNER PRIOR TO ROUGH-IN.

POWER & SYSTEMS PLAN NOTES - AREA C

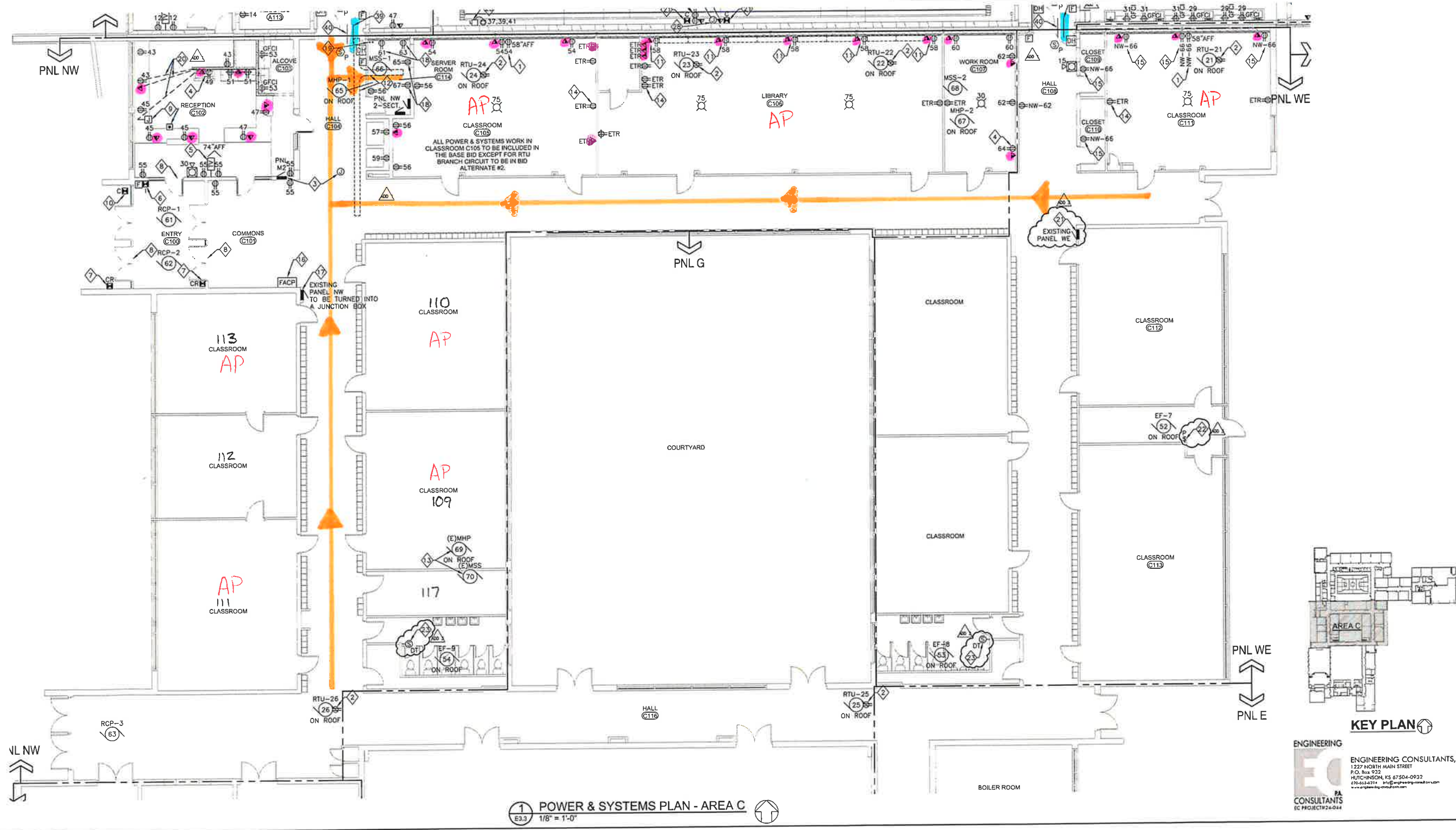
- 6. PROVIDE SINGLE GANG BACK BOX AT 50" AFF WITH 3/4" CONDUIT FROM BOX TO ABOVE NEAREST SUSPENDED CEILING FOR CABLING TO SECURITY CAMERA FURNISHED & INSTALLED BY OTHERS. CONFIRM BACK BOX LOCATION WITH SECURITY SYSTEM SUPPLIER PRIOR TO ROUGH-IN.
- 7. PROVIDE SINGLE GANG BACK BOX AT 42" AFF WITH 3/4" CONDUIT FROM BOX TO ABOVE NEAREST SUSPENDED CEILING FOR CABLING TO DOOR ACCESS CONTROL STATION FURNISHED AND INSTALLED BY OTHERS. CONFIRM BACK BOX LOCATION WITH SYSTEM SUPPLIER PRIOR TO ROUGH-IN.
- 8. PROVIDE 3/4" CONDUIT STUBBED INTO TOP OF DOOR FRAME MULLION AND RUN TO ABOVE THE NEAREST SUSPENDED CEILING FOR CABLING TO ELECTRIC LATCH OR MAG LOCK FURNISHED AND INSTALLED BY OTHERS. CONFIRM CONDUIT REQUIREMENTS WITH SECURITY SYSTEM SUPPLIER.
- 9. PROVIDE SINGLE GANG BACK BOX AT 18" AFF WITH 3/4" CONDUIT FROM BOX TO ABOVE NEAREST SUSPENDED CEILING FOR ELECTRIC STRIKE DOOR CONTROL. PUSHBUTTON CABLING FURNISHED AND INSTALLED BY OTHERS. CONFIRM BACK BOX LOCATION WITH SYSTEM SUPPLIER PRIOR TO ROUGH-IN. PUSHBUTTON AND CABLING TO BE FURNISHED AND INSTALLED BY SECURITY SYSTEM SUPPLIER. PUSHBUTTON TO OPERATE ELECTRIC STRIKE AT DOOR LEADING FROM ENTRY C100 INTO RECEPTION C102.

POWER & SYSTEMS PLAN NOTES - AREA C

- 10. PROVIDE SINGLE GANG BOX IN COVERED CEILING WITH 3/4" CONDUIT FROM BOX TO ABOVE NEAREST SUSPENDED CEILING FOR CABLING TO SECURITY CAMERA FURNISHED & INSTALLED BY OTHERS. CONFIRM BACK BOX LOCATION & HEIGHT WITH SECURITY SYSTEM SUPPLIER PRIOR TO ROUGH-IN.
- 11. FIELD DETERMINE EXACT LOCATIONS FOR RECEPTACLES AND TELECOMMUNICATIONS OUTLETS ON NORTH WALL OF LIBRARY WITH OWNER AND ARCHITECT PRIOR TO ROUGH-IN TO WORK WITH SPACING AND DIMENSIONS OF OWNER-FURNISHED BOOK CASES.
- 12. PROVIDE 12" WIDE X 4" DEEP BLACK LADDER TYPE CABLE TRAY ABOVE CEILING FOR I.T. CABLING FURNISHED AND INSTALLED BY OTHERS. FIELD COORDINATE LOCATION WITH OTHER TRADES AND CONFIRM TRAY LAYOUT WITH OWNER PRIOR TO ORDERING.
- 13. AS PART OF BID ALTERNATE #2, EXISTING MINI-SPLIT SYSTEM LOCATED IN EXISTING PRINCIPAL'S OFFICE TO BE RELOCATED TO THIS LOCATION. EXISTING CIRCUIT WIRING FROM EXISTING PANEL M2 TO BE EXTENDED TO THIS LOCATION.
- 14. TYPICAL FOR ALL "ETR" RECEPTACLES LOCATED IN REMODEL AREAS: REPLACE EXISTING RECEPTACLE AND COVER PLATE WITH NEW. RECONNECT TO EXISTING CIRCUIT WIRING.
- 15. FEED NEW RECEPTACLE FROM EXISTING SPARE CIRCUIT IN EXISTING PANEL WE. IF NO SPARE CIRCUIT EXISTS, FEED FROM NEW PANEL NW, CIRCUIT INDICATED.
- 16. EXISTING FIRE ALARM CONTROL PANEL TO REMAIN. PROTECT DURING CONSTRUCTION.
- 17. EXISTING PANEL NW TO BECOME A JUNCTION BOX. EXISTING PANEL ENCLOSURE TO REMAIN. EXISTING-TO-REMAIN CIRCUITS TO BE INTERCEPTED AND EXTENDED TO NEW PANEL NW. REMOVE EXISTING PANEL INTERIOR AND REPLACE WITH ENCLOSED JUNCTION BOXES WITHIN PANEL ENCLOSURE.

POWER & SYSTEMS PLAN NOTES - AREA C

- 18. PROVIDE DUPLEX RECEPTACLE ON DEDICATED 120V, 20A CIRCUIT FOR I.T. EQUIPMENT POWER. CONFIRM ALL RECEPTACLE LOCATIONS AND HEIGHTS IN I.T. ROOM WITH I.T. PERSONNEL PRIOR TO ROUGH-IN.
- 19. PROVIDE (2) 2" CONDUITS STUBBED THROUGH FLOOR INTO EXISTING TUNNEL SPACE. CONFIRM CONDUIT SIZE AND LOCATIONS WITH I.T. PERSONNEL PRIOR TO ROUGH-IN.
- 20. CUT EXISTING FLOOR TO FEED RECEPTACLES & TELECOMMUNICATIONS OUTLETS IN DESK AREA FROM NEW WALL AS SHOWN. E.C. TO PATCH FLOOR TO ACCEPT NEW FLOORING.
- 21. REPLACE (1) EXISTING 20H CIRCUIT BREAKER WITH (1) NEW EATON CUTLER HAMMER B07320 DUPLEX CIRCUIT BREAKER IN EXISTING WESTINGHOUSE TYPE NPL4B-25-3L200 PANEL WE TO FEED NEW EXHAUST FAN EF-2.
- 22. PROVIDE SURFACE-MOUNTED SWITCH WITH PILOT LIGHT FOR CONTROL OF EXHAUST FAN, EF-7. FIELD DETERMINE BEST LOCATION FOR SWITCH.
- 23. AS PART OF BID ALTERNATE #2, IN SAME BACK BOX FROM REMOVED TOGGLE SWITCH, PROVIDE DUAL TECHNOLOGY (COMBINATION PASSIVE INFRARED/A TRASONIC) WALL SWITCH OCCUPANCY SENSOR WITH 180 DEGREE COVERAGE, WATTSTOPPER DSW-301-W, OR EQUAL, WHITE FINISH, FOR THE CONTROL OF NEW EXHAUST FAN. INSTALL PER MANUFACTURER'S INSTRUCTIONS. AFTER TESTING UNIT, SET TIME DELAY OFF TO 10 MINUTES, "ON MODE" TO AUTO ON AND DISABLE AUDIBLE ALERT. KEEP ALL OTHER FACTORY SETTINGS. PROVIDE SINGLE GANG DECORATOR STYLE COVER PLATE IN STAINLESS STEEL.



1 POWER & SYSTEMS PLAN - AREA C
E3.3 1/8" = 1'-0"



LANDMARK ARCHITECTS
1020 NORTH MAIN, HUTCHINSON, KANSAS 67501 620-663-5471 www.landmarkarchitects.net

ELEMENTARY ADDITION AND RENOVATIONS TO LA CROSSE MIDDLE/HIGH SCHOOL, USD 395
400 WASHINGTON, LA CROSSE, KANSAS 67548

COMMA. NO. : 2912-24
DRAWN BY : LEE
REVISED : 08/14/24
DATE : JULY 2024
SHEET E3.3

ENGINEERING CONSULTANTS, P.A.
1227 NORTH MAIN STREET
P.O. Box 922
HUTCHINSON, KS 67504-0922
620-663-4374 info@engineeringconsultants.com www.engineeringconsultants.com